

TIIG

INJURY SURVEILLANCE IN THE NORTH WEST OF ENGLAND

Macclesfield District General Hospital Emergency Department Monthly Bulletin: July 2012 to June 2013

This bulletin provides a breakdown of all injury attendances at Macclesfield District General Hospital Emergency Department (ED) between July 2012 and June 2013.

Between July 2012 and June 2013 there were 23,591 ED attendances. Injury attendances peaked in June (n=2,161), with February (n=1,689) having the least number of injury attendances. There were slightly more male injury attendances than female presenting at Macclesfield District General Hospital ED (51%) (Figure 1).

Figure 2 presents the age group of injury attendances. Across the whole year, injury attendances were highest for individuals aged 30-59 years (32%).

Table 1 details the injury group of injury attendances. The majority of injury attendances were classified as other injury (85%) and 7% were recorded as sports injury.

Table 2 illustrates the source of referral for patients presenting with injuries. The majority (76%) of injury attendees self-referred.

Table 3 presents injury attendances by location of incident. Over half (51%) of all injury locations were recorded as other and 22% recorded as public place.

Table 4 shows the discharge destination of injury attendances. Over a third (34%) attendees were discharged without requiring any follow-up; whilst almost a quarter (23%) were discharged requiring follow-up treatment.

Assault attendees presenting at Macclesfield District General Hospital ED between July 2012 and June 2013 were mainly male (62%) and over four in ten (43%) were aged between 18 and 29 years of age. Table 5 shows the primary location of assault was recorded as other (53%). Almost three in ten (29%) of assaults were recorded as occurring in a public place.

Figure 1: Gender of injury attendances by month, July 2012 to June 2013

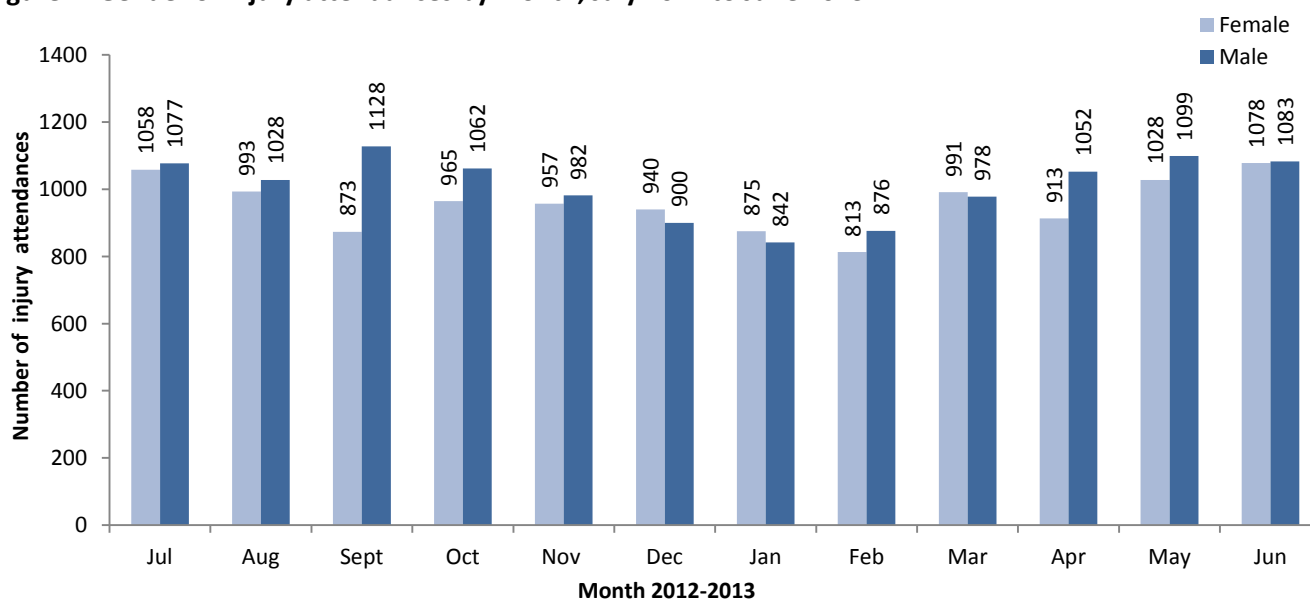


Figure 2: Age group of injury attendances by month, July 2012 to June 2013

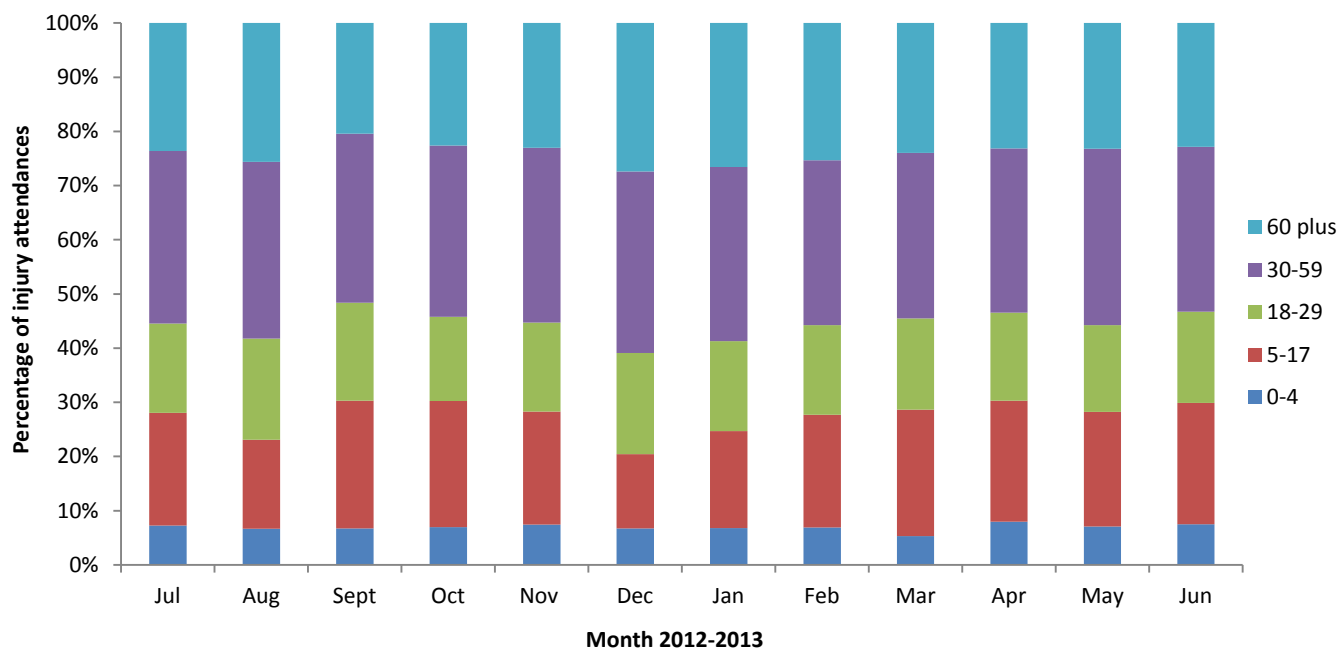


Table 1: Injury attendances by injury group, July 2012 to June 2013[^]

Injury group	Jul	Aug	Sept	Oct	Nov	Dec	Jan	Feb	Mar	Apr	May	Jun	Total	%
Other injury	1830	1789	1700	1682	1628	1598	1464	1448	1688	1660	1822	1840	20149	85
Sports injury	151	83	147	198	149	83	114	108	150	163	150	153	1649	7
Road traffic collision	68	35	53	45	60	46	42	54	47	42	66	65	623	3
Deliberate self-harm	51	55	55	38	45	44	56	42	52	44	56	59	597	3
Assault	35	59	46	64	57	69	41	37	32	56	33	44	573	2
Total	2135	2021	2001	2027	1939	1840	1717	1689	1969	1965	2127	2161	23591	100

[^] Due to small numbers firework injury (n=1) has been included in the other injury group.

Table 2: Injury attendances by source of referral, July 2012 to June 2013¹

Source of referral	Jul	Aug	Sept	Oct	Nov	Dec	Jan	Feb	Mar	Apr	May	Jun	Total	%
Self-referral	1614	1594	1575	1531	1494	1435	1231	1268	1442	1477	1646	1722	18029	76
Other	245	168	167	207	230	204	261	190	248	261	260	180	2621	11
Health care provider	182	180	151	179	130	126	126	125	185	151	170	190	1895	8
General medical practitioner	47	48	62	48	40	50	49	49	45	43	35	40	556	2
Educational establishment	20	***	19	26	18	5	15	21	18	15	***	10	170	1
Police	10	15	17	16	14	9	10	23	15	9	7	14	159	1
Work	15	14	10	20	13	11	25	13	14	9	6	5	155	1
General dental practitioner	***	***	***	***	***	***	***	***	***	***	***	***	***	0
Local authority social services	***	***	***	***	***	***	***	***	***	***	***	***	***	0
Total	2135	2021	2001	2027	1939	1840	1717	1689	1969	1965	2127	2161	23591	100

Table 3: Injury attendances by incident location, July 2012 to June 2013¹

Incident location	Jul	Aug	Sept	Oct	Nov	Dec	Jan	Feb	Mar	Apr	May	Jun	Total	%
Other	1098	1101	966	1023	953	946	859	819	1059	1026	1009	1242	12101	51
Public place	502	433	528	477	435	361	359	408	390	446	487	421	5247	22
Home	363	380	348	321	340	373	331	293	316	319	414	322	4120	17
Work	94	<110	80	104	127	<100	93	94	88	103	123	94	1202	5
Educational establishment	78	***	79	102	84	<65	75	75	116	71	94	82	921	4
Total	2135	2021	2001	2027	1939	1840	1717	1689	1969	1965	2127	2161	23591	100

¹ Please note that for all tables, all numbers less than five have been suppressed in line with patient confidentiality and if there is only one number in a category then two numbers will be suppressed at the next level (e.g. <6) in order to prevent back calculations from totals.

Table 4: Injury attendances by discharge destination, July 2012 to June 2013*¹

Discharge	Jul	Aug	Sept	Oct	Nov	Dec	Jan	Feb	Mar	Apr	May	Jun	Total	%
Discharged - did not require any follow up treatment	756	637	652	707	680	591	557	596	616	666	703	783	7944	34
Discharged - follow up treatment by GP	458	452	437	445	403	392	391	381	497	464	501	495	5316	23
Referred to fracture clinic	245	255	230	236	205	240	238	193	207	239	274	249	2811	12
Referred to ED Clinic	206	213	233	211	218	177	173	183	254	203	229	229	2529	11
Admitted to a hospital bed	209	199	229	207	217	236	199	162	206	185	186	194	2429	10
Referred to other out-patient clinic	109	110	84	98	96	88	74	78	94	105	129	120	1185	5
Left department before being treated	45	47	55	26	26	31	17	34	32	50	37	36	436	2
Other	51	63	38	52	50	31	25	23	20	13	20	20	406	2
Transferred to other HCP	18	17	19	19	15	21	15	15	18	20	21	18	216	1
Referred to other HCP	24	20	14	14	16	25	17	15	12	12	16	9	194	1
Left department having refused treatment	<15	<10	<15	<15	<15	<10	<15	<10	<15	<10	<15	<10	118	1
Died in department	***	***	***	***	***	***	***	***	***	***	***	***	7	0
Total	2135	2021	2001	2027	1939	1840	1717	1689	1969	1965	2127	2161	23591	100

*HCP – Health care provider, GP – General practitioner

Table 5: Location of assault for assault attendances, July 2012 to June 2013¹

Incident location	Jul	Aug	Sept	Oct	Nov	Dec	Jan	Feb	Mar	Apr	May	Jun	Total	%
Other	18	35	23	26	24	36	24	20	20	34	21	25	306	53
Public place	9	17	17	25	17	22	10	11	5	15	7	10	165	29
Home	***	***	***	7	<10	7	***	***	***	***	***	***	49	9
Work	5	***	***	***	8	***	***	***	***	***	***	5	37	6
Educational establishment	***	***	***	<10	***	***	***	***	***	***	***	***	16	3
Total	35	59	46	64	57	69	41	37	32	56	33	44	573	100

Published August 2013

Jennifer Brizell (TIIG researcher)

Centre for Public Health, Faculty of Health and Applied Social Sciences, Liverpool John Moores University

2nd Floor, Henry Cotton Campus, 15-21 Webster Street, Liverpool, L3 2ET

Tel: 0151 231 4500 Email: j.s.brizell@ljmu.ac.uk

Website: www.tiig.info (please note all data requests should be made through the TIIG website)

¹Please note that for all tables, all numbers less than five have been suppressed in line with patient confidentiality and if there is only one number in a category then two numbers will be suppressed at the next level (e.g. <6) in order to prevent back calculations from totals.